

# National Professional Qualification for Leading Behaviour & Culture (NPQLBC)

Lead behaviour, culture and pupil wellbeing



The national charity for  
effective professional development  
in schools and colleges



[TDTrust.org/npq](https://tdtrust.org/npq)



[npq@tdtrust.org](mailto:npq@tdtrust.org)



020 3961 6794

# Lead behaviour, culture and pupil wellbeing

A ground-breaking new NPQ ideal for those who have, or are aspiring to have, responsibilities for leading on behaviour and culture within their school and support others in these areas

- Gain a nationally recognised, prestigious, government-backed qualification to help you progress in your career
- Develop knowledge and understanding of how to apply the evidence on how to create and support an effective school and classroom culture, underpinned by positive behaviour and wellbeing
- Learn flexibly around your job with a blend of online learning, virtual sessions and local face to face workshops



## Benefits for you

- Develop knowledge and understanding of how to apply the evidence on how to create and support an effective school and classroom culture, underpinned by positive behaviour and wellbeing
- A blended learning experience which fits around your role where you learn and discuss key content online, delivered in a way that suits the busy working lives of teachers and school leaders
- Local virtual and face to face sessions that focus on real problem-solving, creating understanding, connecting with your peers and gaining depth of knowledge
- Ongoing preparation to give you confidence to pass the final assessment
- Facilitation and support from serving school leaders in excellent schools and delivery at local venues

## Benefits for your school or trust

- A skilful and research-informed professional who can lead the improvement of pupil wellbeing, create calm classrooms, great pupil behaviour and a warm whole-school culture



- Practical capability to get on with the job of developing others with the skills to lead with people and teams, creating change and impact
- The ability to review and evaluate practice in order to bring about change and get the best outcomes for young people and staff within the organisation

## Our Approach

Delivery of the curriculum is grounded in TDT's values of:

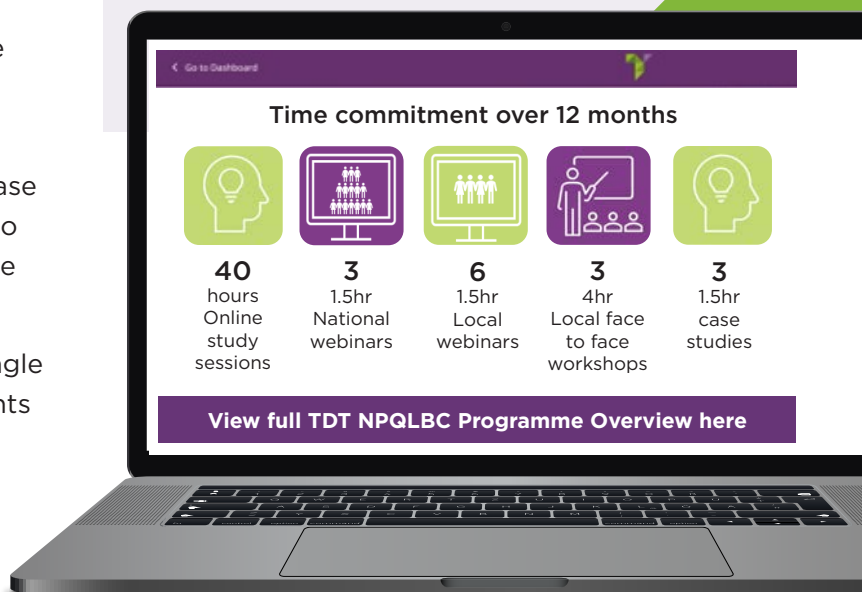
- SMART - we think about what the evidence tells us, but we also really care about how things are done
- HEART - it's not just taking the evidence base and implementing it any old way, it needs to be done in the right way if you want to have that sustainable impact
- HUMBLE - we recognise that there is no single perfect answer to any situation - participants will come from different environments, different schools, different contexts - and we need to understand the limits of what the evidence tells us at times and use our judgement

## The course

A blend of flexible online learning, online discussion, virtual workshops and face to face workshops, for a few hours study each week over 12 months. This is followed by an assessment where you will complete a 1500-word case study assessment to demonstrate your understanding of real leadership and change.

This completely new **Specialist NPQ** has an evidence-informed curriculum design, connecting you to the latest research and best practice. Our research-rich course covers all of the core content in the **government's Framework** for this qualification. It will help you to:

- Understand how to support effective teaching and great classroom culture and behaviours
- Support wider school culture, pupil wellbeing and complex behavioural needs
- Professionally develop others, creating change and supporting school culture



“

*The course material is **utterly brilliant**. Such **high quality** and **carefully crafted**. The **spirit and ethos of TDT** is forefront.”*

“

*Facilitator material is **inspirational and purposeful, enjoyable** and **thought-provoking**. **Boy, have TDT got it just right!**”*

## Booking information

### Funding and Cost

Full scholarship funding, with no cost to the participant, for the NPQ in Leading Behaviour and Culture is available to all teachers who meet the following criteria:

- have, or are aspiring to have, responsibilities for leading behaviour or supporting pupil wellbeing in their school
- all teachers and leaders employed in state-funded schools and state-funded organisations that offer 16 to 19 places in England

The course fee is **£899**

*Up to date information on funding is available on the DfE website*

### More information

The Teacher Development Trust is an internationally leading charity in the fields of staff development and school improvement through people development. Founded by practising teachers and leaders in 2012, we've helped hundreds of schools and leaders to create lasting improvement.

Find out more about TDT NPQs, our charitable mission and work at [TDTrust.org/npqs](https://tdtrust.org/npqs)

## Your local partner



0208 289 4767  
thamessouthtsh@nestschools.org

Thames South TSH  
c/o Nexus Education Schools Trust  
Brackley Road  
Beckenham  
BR3 1RF

At Thames South Teaching School Hub we ensure that teachers and leaders from schools in Bexley, Bromley and Greenwich can benefit from the highest quality, evidence-informed training and development, whatever the stage of their career.

We believe that professional learning is at the heart of school-led improvement and through our strong collaborative partnerships, we are able to draw upon knowledge, expertise and experience to develop, support and inspire teachers and leaders from across all phases and settings.

We are delighted to be offering the new suite of National Professional Qualifications, delivered in partnership with the Teacher Development Trust, to provide professional learning of the highest quality for local schools, teachers and leaders and improve education for all.

[www.thamessouthtsh.org](https://www.thamessouthtsh.org)



©Teacher Development Trust 2022

Approved NPQ provider



**The national charity for  
effective professional development  
in schools and colleges**